

FVE Skylight



Read the entire instruction before using the FVE Skylight

Contents / Important information

Contents / Important information	2
Description of the Skylight FVE	3
Description of the ZRC US controller	4
Quick start up	5
Advence option - Programing ZRC to skylight / Changing Security Code	6
Other Information	7
Connetion of the ZKC US controller	7
Manual emergency closing of the skylight	7
Rain sensors	7
Warranty	8

Important information

Read the entire instruction before using the FVE skylight.

- Make sure that insect screen is installed prior to operation of the skylight.
- FVE skylight and accessories (when connected) are factory set to operate in AUTOMATIC mode. It means that one press of „open” button will open the skylight to it's maximum. When „close” button is pressed, the skylight will close totally. In order to stop the skylight in desired possition, you need to press „stop” button.
- Remote control ZRC has been designed for the use with FAKRO products. Use of this unit with other equipment may cause malfunction.
- The batteries provided are 1xCR2450, 3V.
- After removing the packaging, make sure the equipment has not been damaged.
- Before connecting the equipment, make sure that the supply voltage corresponds to the appliance voltage indicated on the “technical data” label on the equipment.
- This equipment must be only used for the purpose for which it has been built. The manufacturer cannot be considered liable on any damages or problems arising from improper use.
- The installation has to be carried out in accordance with the instructions of the manufacturer. The non observance of these instructions could compromise safety.
- The power must be switched off when connecting the skylight, installing accessories, and whenever the cover of the electiric elements is removed,
- Call for a service when operator does not work properly,
- Make sure children will not be able to play with the skylight (keep the remote away from children),
- Switch off the power to the system before you have your hand or body out of the skylight. The motor automatically closes the skylight when rain sensor gets wet.
- To clean the skylight or perform the maintenance always switch of the power to the system.
- Disposal of used batteries shall conform with relevant environmental regulations.

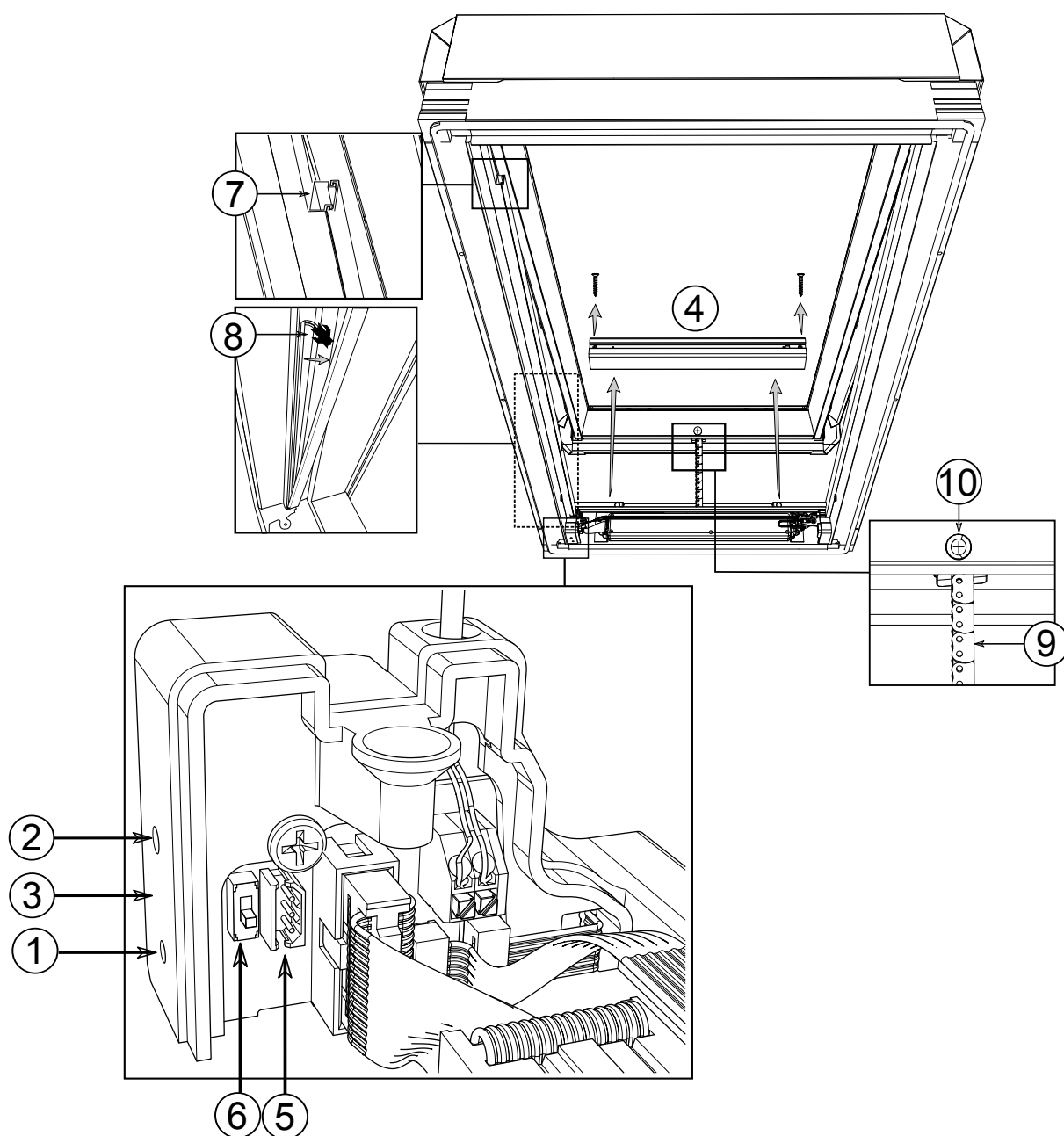


WARNING!!!

Danger of crashing. While closing, the motor exerts the force of 250N (app. 25kg).

Description of the skylight FVE

FVE skylight is designed to be installed on the roof. It is equipped with chain motor, two rain sensors, ZRC remote control unit, and necessary cabling to connect internal electric blind. The FVE skylight can be powered with 100-240VAC 50/60Hz electricity. Remote control ZRC has a factory setting to operate the FVE skylight on channel number [1].



1. FVE skylight program button
2. IR receiver diode
3. Settings signaling diode
4. Cover
5. Plug to connect ZKC keyboard
6. Switch activating ZKC keyboard
7. Gutter for the blind cable
8. Cable connector for electric blinds connection (SRF-EV, SJP-EV)
9. Motor chain
10. Chain blockig screw in the sash

Description of ZRC US controller

The remote has 4 channels. and within each channel there are two columns of control buttons. First column of buttons controls FVE skylight, and the second one controls the internal blind. As standard (factory settings), opening and closing of the skylight is assigned to work on channel [1] of the remote. Remaining channels can be used to operate additional skylights or electric blinds.

1 - Active channel signaling :

Diode [1] - indicating preselection of control channel no.1 to operate skylight no.1

Diode [2] - indicating preselection of control channel no.2 to operate skylight no.2

Diode [3] - indicating preselection of control channel no.3 to operate skylight no.3

Diode [4] - indicating preselection of control channel no.4 to operate skylight no.4

Diode [1 2 3 4] - indicating preselection of control channel no.1 2 3 4 operate all skylights

2 - SELECT - button for changing control channels and programming.

3 - Button of MOVEMENT - OPEN

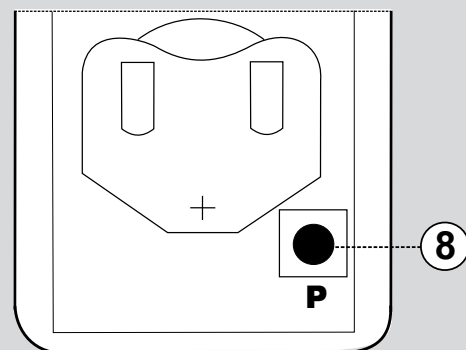
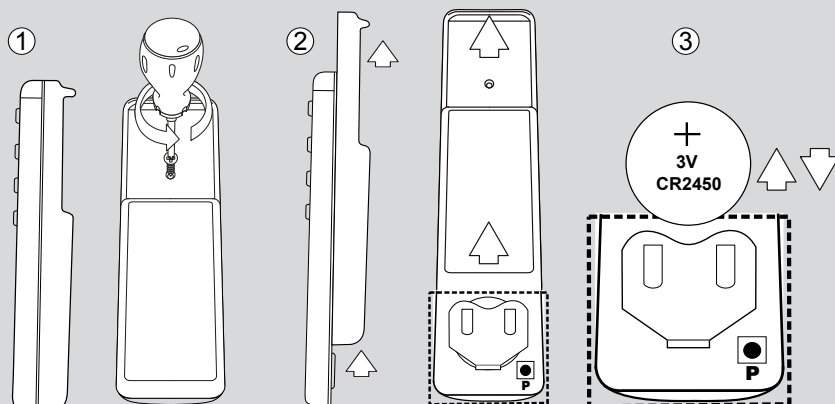
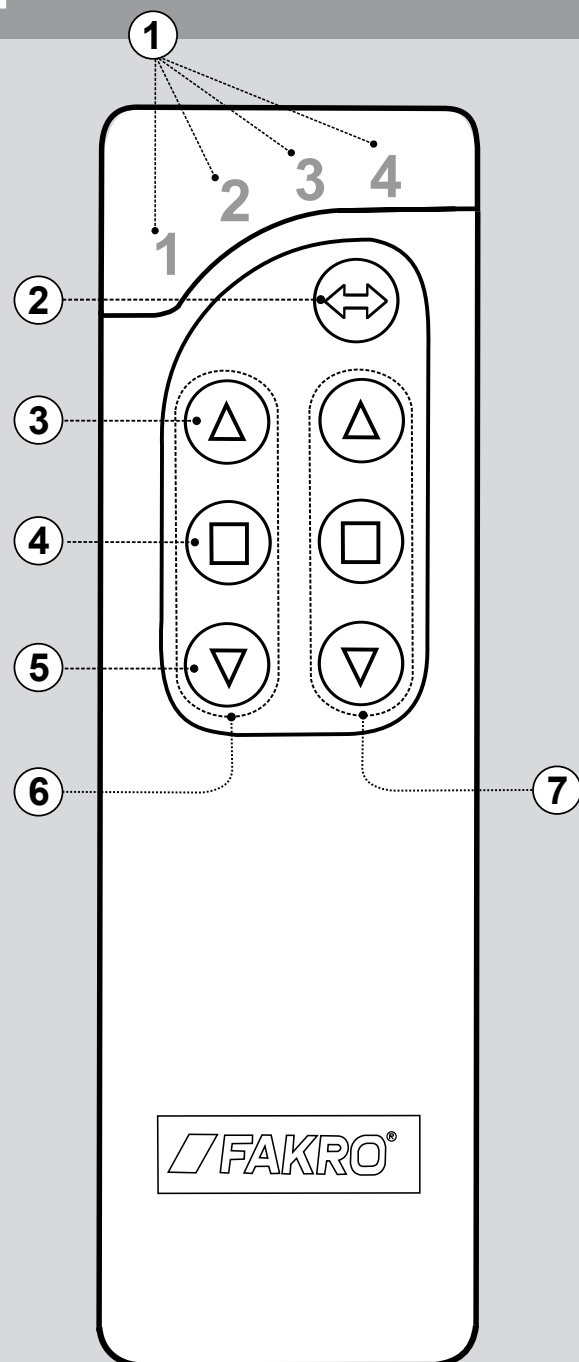
4 - Button of MOVEMENT - STOP

5 - Button of MOVEMENT - CLOSE

6 - Group of the buttons of movement - to operate skylight.

7 - Group of the buttons of movement - to operate accessories (SRF-EV, SJP-EV)

8 - Programming Button



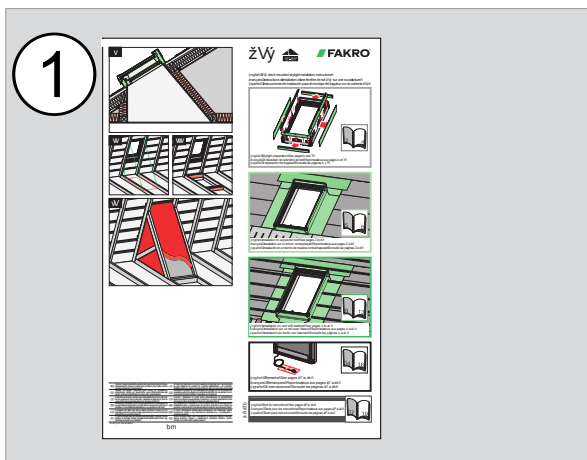
1. Unscrew the securing screw in the back cover of the remote control

2. Slide up and remove the back cover of the remote control

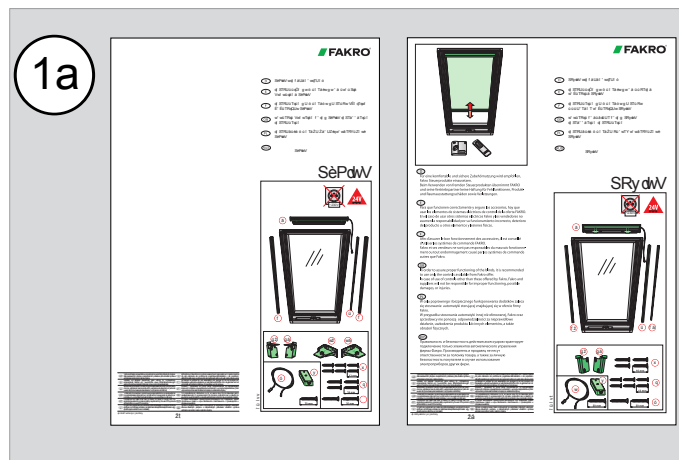
3. Remove discharged 3 VDC battery and place a new one

Replace the back cover and secure it with the screw.

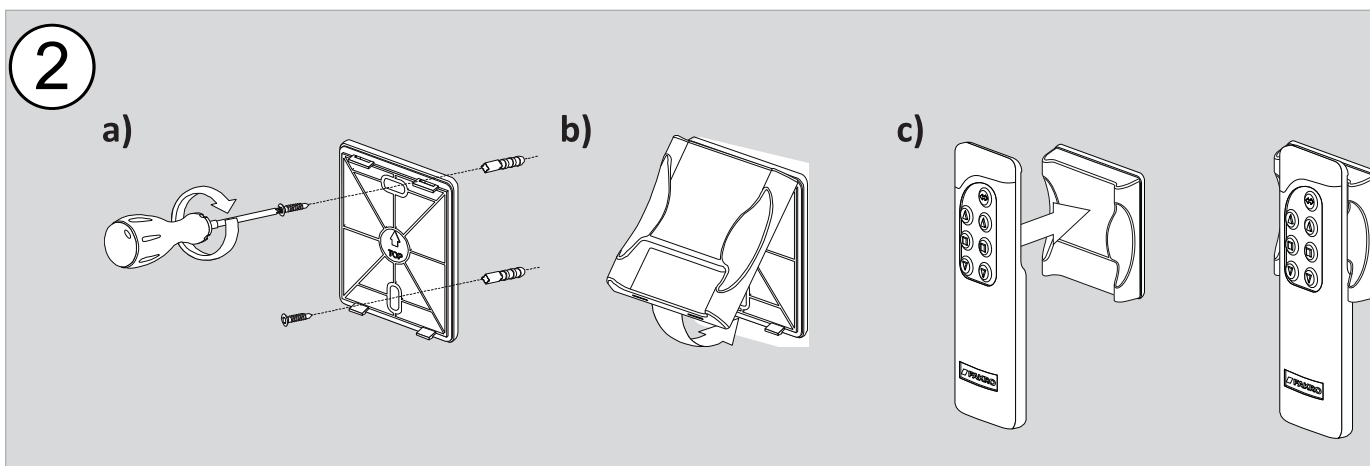
QUICK START UP



1. Install the skylight according to the FVE installation instruction (NC 142)



1a. Install and connect the internal blind according to the installation instruction (NC955 or NC956)(an option)

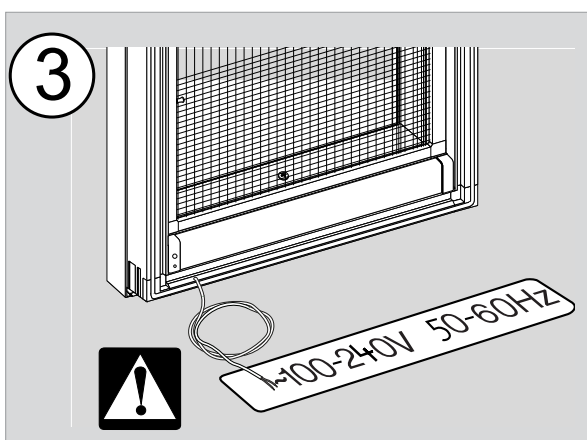


2. Attach holder to the remote control in a location that is convenient for you.

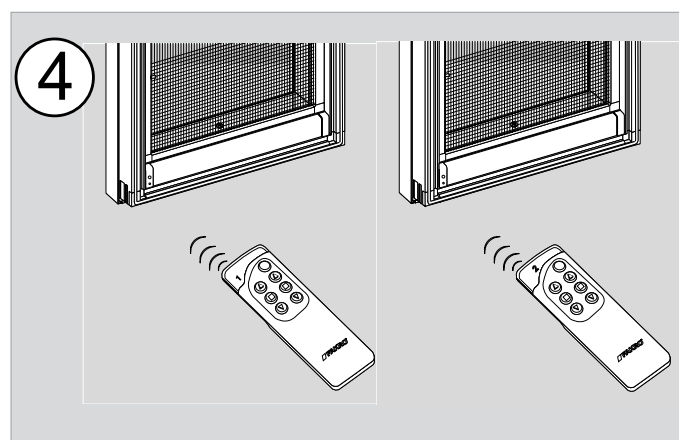
a). Screw holder firmly to the wall with the use of anchor pins.

b). Put the washer on the holder.

c). Check whether the remote control is firmly located in magnetic washer.



3. Connect the skylight to the power source (100-240VAC). Be careful to avoid electric shock.



4. Remove the protecting foil from the remote control battery, and point the remote towards the skylight. Select channel [1]. Using first column of buttons (left side) you will operate the skylight, while the second column will operate the blind.




If you does not react to the comment sent by remote from channel no.1 please go programming procedure from p. 6. !!!


Advance option - Programing ZRC to skylight Changing Security Code

Infrared remote control ZRC allows to assign to each of the channels (channel no. [1], [2], [3], [4]) one or more skylights with the blinds. Channel no. [1] as standard is factory set to operate one skylight. In order to add more skylights to next channel, please follow below steps:

1 Presing SELECT button on the remote, choose channel no. [2]. Using small screwdriver press and hold the programming switch through the hole in the skylight's operator side plastic untill red indicastion light start flashing.

2 Than, point the remote towards the skylight and press one of the skylight movment buttons. Once it's done, the remote control code is stored in the skylights control unit memory.

 If you have no access to skylight you can also start programing procedure by switching OFF power supply and than restoring it. When red indication light start flashing you will have 10 seconds to point remote and send any command.

 If you need to assign more skylights to the same or other channel, repeat the procedure from point 1.

After the programming is done corretly, you will be able to operate skylights by changing the channel on the remote.

Channel no. [1234] using to operate all skylight or blinds in the same time.

Operation of the internal blinds installed on each of the FVE skyligths is always done by the second group of buttons on the ZRC remote (No.7 page 4).

Change of the remote control code


To obtain maximum security it is recommended to frequently change the security code. Setting your personal code, will give an assurance that the skylight(s) can be operated only from your own remote control unit.

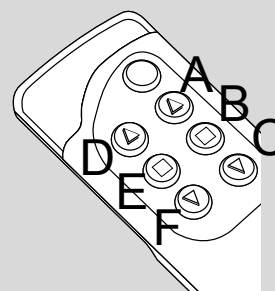
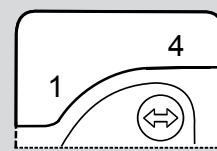
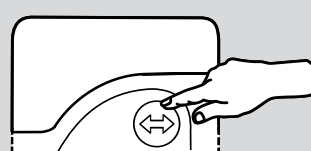
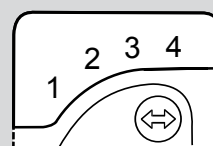
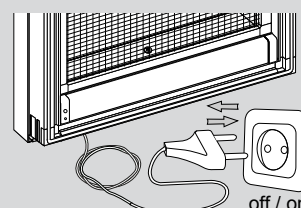
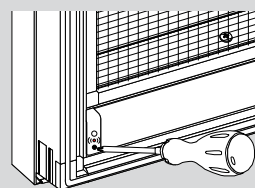
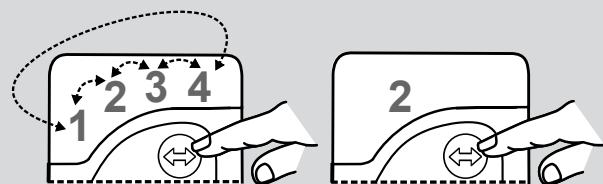
To change the code:

1 Press programing button **P** [8] until diode [1] and [4] will light on. During 10sek. choose any combination of the security code by

pressing any of the movment buttons from A to F on the remote.

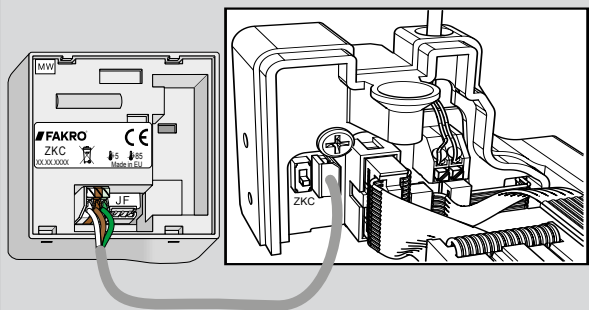
By pressing any of the A-F remote buttons you change the status from 0 to 1. If you press A, C, E buttons the code will change into 1-0-1-0-1-0. In order the reset the security code, press **P** button until diode [1] and [4] will light on. Press **P** button again to reset the code. After this the security code is set in the following combination 0-0-0-0-0-0.

 After the security code change, YOU MUST repeat programming procedure with every skylight that will be operated with the remote.




Connetion of the ZKC US controller.

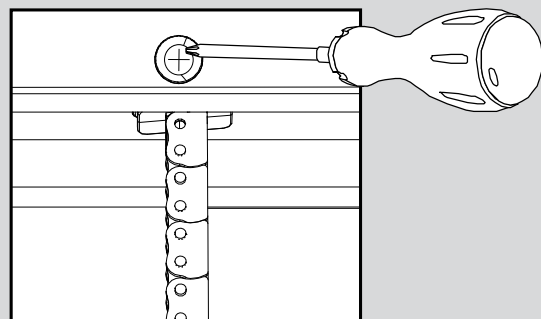
As an option each of the FVE skylight can be additionally operated by ZKC US keypad In order to connect the ZKC US keypad to a FVE skylight, you must remove the mosquito screen and the bottom cover. Wiring requires also to drill a hole in bottom part of the frame to feed through the cable, so it is recommended to plan the use of ZKC US keypad before any plastering will take place. Side drawing shows wiring diagram between ZKC US socket and ZKC US keypad. ZKC US keypad works in similar way as ZRC US remote control and require programming like in case of ZRC remote.



Manual emergency closing of the skylight.

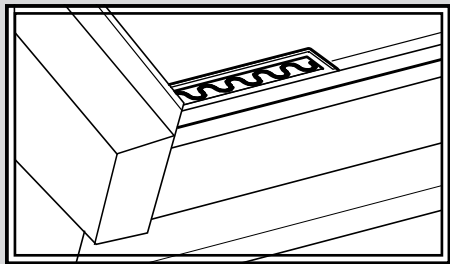
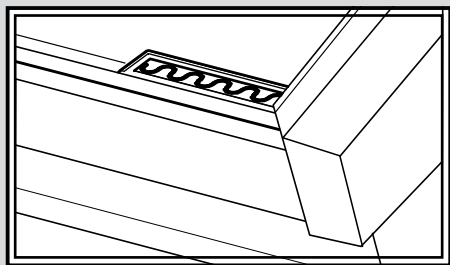
In case of power failure, the skylight (if opened), can be closed manually. To close the skylight, remove the mosquito screen, and using the screwdriver unscrew the screw locking the motor chain in the chain socket. Holding the sash, align the chain along the cover, and close the window.

 This is only emergency solution. Do not leave the house unattended, as the skylight is possible to be opened from outside. As soon as the power is restored, put the chain to it's original position as well as the mosquito screen. As the power can be restored at any time during unlocking the chain, and the closing procedure of the skylight can be activated by rain sensors (when raining), to avoid personal injuries make sure the skylight is disconnected from the power main.



Rain sensors

Rain sensors are pre-installed at the factory. The rain sensors ensure that the skylight automatically closes if it rains through the skylight. Do not paint or varnish the rain sensors. When the skylight is wide open, it takes about 30 seconds before the skylight is completely closed. Therefore, during heavy rain, water may enter the room before the skylight is closed fully. Please pay particular attention if furniture is placed below the skylight. The rain sensors may not react to very fine/weak rain, fog or dew. Dirt on the rain sensors may cause operating problems. Therefore, it is recommended to clean the rain sensor with a soft damp cloth when needed. Remember to switch off the power before cleaning!



Technical data

Voltage Rated	100 – 240 VAC
Current Rated	0,12 – 0,06 A
Chain unfolding rate	7,5 mm/s
Power cable	2 x 0,75 mm ²
Power	10 W
Current limit	Yes
Chain pushing force	200 N
Closing force	200 N
Working temperature	up (-10°C) to (65°C)
Chain reach	170 mm

Warranty

Warranty

The manufacturer guarantees correct device functioning. It also undertakes to repair or replace the device if its defects result from material or structural faults. The warranty period is 24 months from the purchase date, fulfilling the following condition:

- Installation has been performed by an authorised individual, as per manufacturer recommendations.
- Seals remain intact and no unauthorised structural changes have been made.
- The device has been used in accordance with its intended use as per user manual.
- Damage is not a result of improperly made electrical system or atmospheric phenomena.
- The manufacturer is not liable for damage which occurred as a result of improper use or mechanical damage.

In case of failure, the device must be submitted for repair with a Warranty Card. Defects revealed within the warranty period will be removed free of charge no longer than 14 days after accepting the product for repair. Warranty and post-warranty repairs are performed by the manufacturer i.e. FAKRO PP. Sp. z o.o.

Quality Certificate:

Device:

Model
Serial number
Seller
Address
Date of Purchase

.....
Signature (stamp) of installing person

FAKRO PP Sp. z o.o.

ul. Węgierska 144A

33-300 Nowy Sącz

Polska

www.fakro.com

tel. +48 18 444 0 444

fax. +48 18 444 0 333