

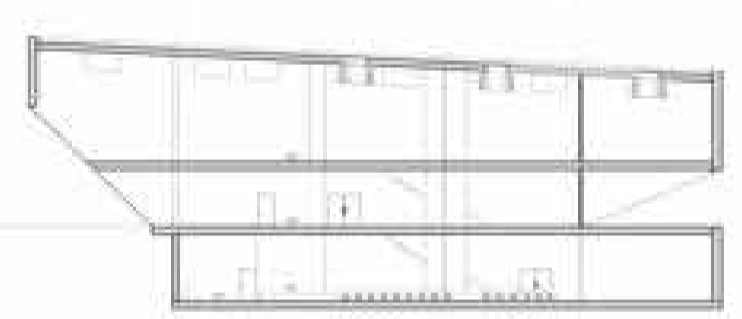
Floor +1 1:200



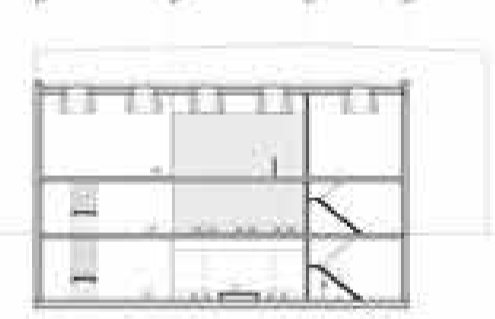
Ground floor 1:200



Floor +1 1:200



Section AA 1:200



Section BB 1:200

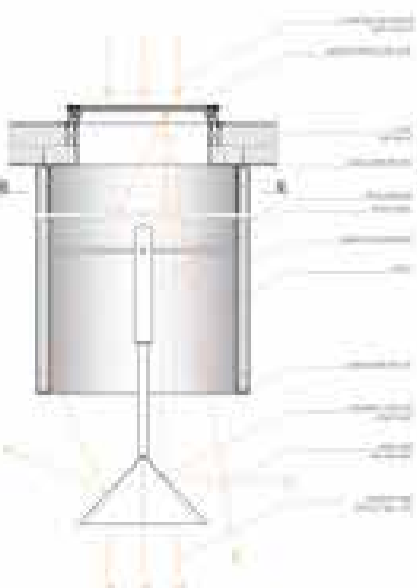


Front elevation 1:200

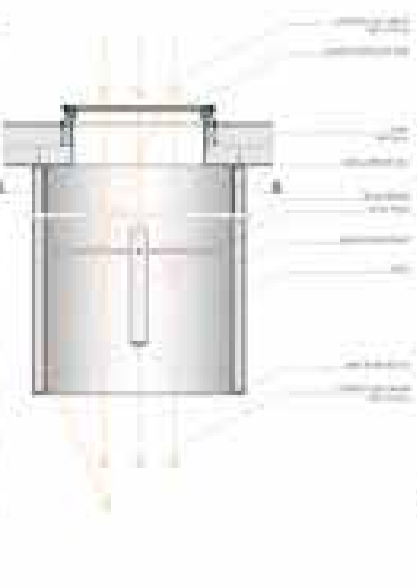


Side elevation 1:200

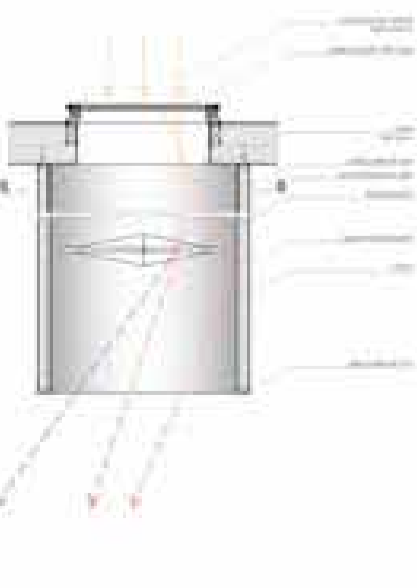
SECTION A-A
OFFEN (BETON) 1:20



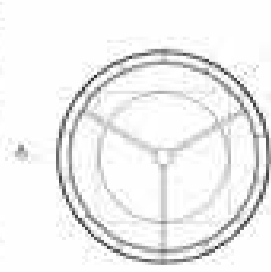
SECTION A-A
GESCHLOSSEN (BETON) 1:20



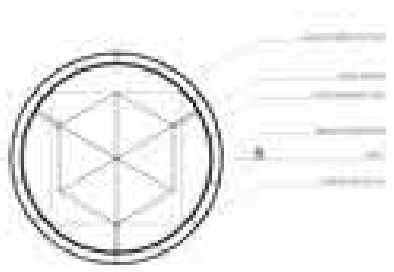
SECTION A-A
HALBOFFEN (BETON) 1:20

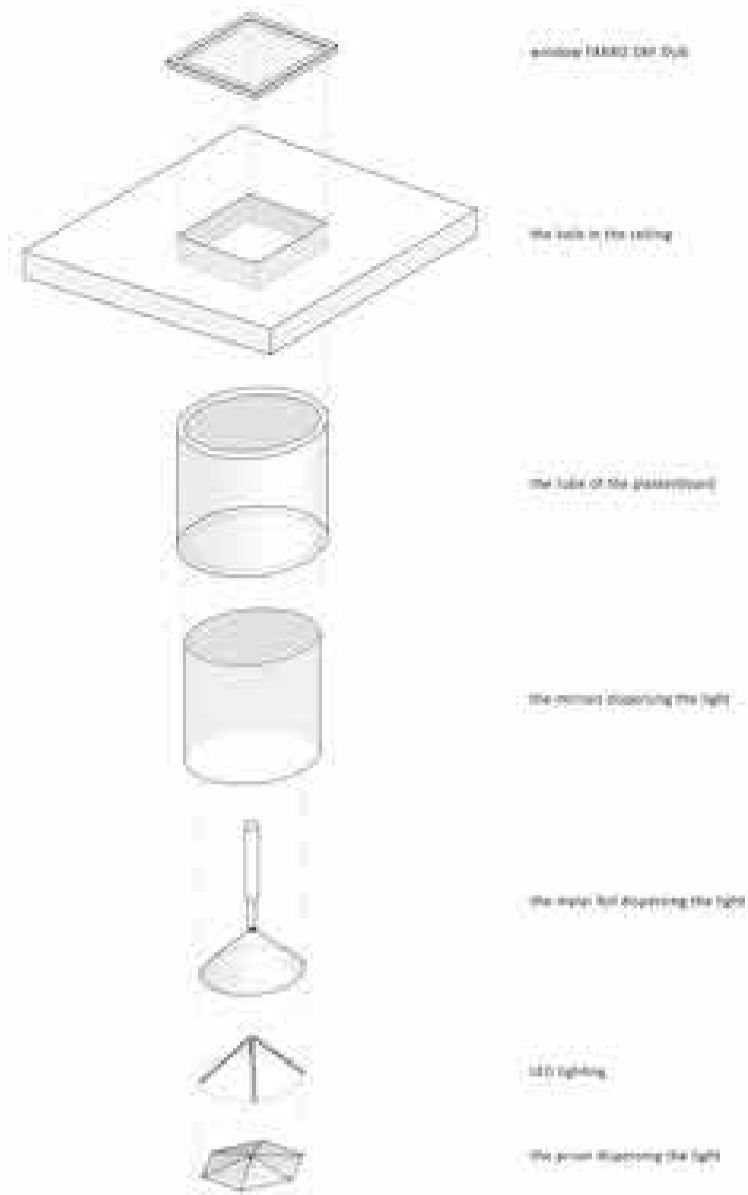


SECTION A-A
OFFEN (ALU) 1:20



SECTION A-A
HALBOFFEN (ALU) 1:20





The Margherita building is a lecture hall - a space intended not only for talks, but also for artistic activities, discussions and creating visual relations between art and its recipient - a spectator. The particular attention was paid to the way of the connection of designed building with the existing structure of the city. The building is located in Coimbra (in former Massachusetts) street in Nicosia. The specific location was the main problem - newly designed building, fitting with function, but typically located in the city space. The functional programme of the lecture hall also comes a challenge - it needs to be executed as a relatively small set of the specific shape and proportions. One of the goals of the project is to create a building that makes possible to be its interior and at the same time encourages them to admire the light shapes. It is supposed to be so-called "urban magnet" which is established as a cultural magnet. The location allows each lecture as a quiet area and maintains a distance from the noisy city center.

The main concept of the project is the light shapes, this intention can be seen in all stages of the design. Our intention was not only to design the building, we also wanted to create a space which integrates many elements into one harmonious form. The inspiration for the look of the building was a ray of light, its dynamics, how it expands, the propagation of a light beam. The designed system with numerous elements allow to fill the space with the light. The shape is a consequence of the building, it continues reflects the nature of the block, and allows the shape of existing contained spaces. The interior of the hall with a canopy are filled with both natural and artificial lighting. The space was mainly formed by using the light, it's not just changing the lighting intensity during the day, but also the color filling the interior. The simplicity of the other - unusual spaces and creative forms are the basis of the sustainable character of the building.

